



SCHOTT

Diamantwerkzeuge GmbH

Diamond Tools

for Processing Glass and Ceramics



Why We Are the Adequate Partner for You:

Company history: As a grandson of the wellknown Dr. Otto Schott (the inventor of the heatresistant borosilicate glass 1887 or better known as "Jenaer Glas") Klaus Schott already had a familiar relationship with the glass industry. His father, his brothers and he were working for the internationally well-known SCHOTT Glaswerke AG.

In 1975 Klaus Schott set up his own business and delivered diamond tools for the glass industry. Besides dealing with products of the application in the glass industry, Klaus Schott started manufacturing his own diamond tools in order to meet more adequately the requirements of his national customers and the glass industry.

After many years of working for the company, Burghard Lein became owner and managing director in 2000.

Competences: The company SCHOTT Diamantwerkzeuge GmbH provides only state-of-the-art quality products manufactured according to its customers' specific requirements for processing of glass, ceramics, stone, metal and synthetic materials as well as for the optical industry.

Besides the series production of standard tools the main competence is focussed on producing individually electroplated and sintered diamond tools for conventional and ultrasonic-based application.

The company's main focus and strength is the area of research and development of innovative technologies for developing tools and their application. Especially in the field of manufacturing and testing diamond tools, which qualify for ultrasonic application, SCHOTT Diamantwerkzeuge is one of the leading companies.

Orientation: The continuous increase of international customers made SCHOTT Diamantwerkzeuge GmbH set up local service centers for customer support. Prestigious selling agencies were put up in Bulgaria, Siberia, USA and Asia. Establishment of other agencies is in progress in order to be able to react to the growing requirements of the global market.

Guarantee: The company SCHOTT offers state-of-the-art-quality at a favorable price within the shortest delivery time possible.

You can take us up on that!

Yours faithfully,



Burghard Lein
Managing Director



Product Range

	Diamond Hollow Drills Corebits	drilling	M Ø 3 - 598 mm full coating and segmented GVD Ø 0,5 - 75 mm
	Chamfering Tools	counter-sinking and bordering	M SB 0,1 - 125 mm GVB SB 0,1 - 150 mm
	Combined Diamond Tools	drilling and countersink	M Ø 3 - 150 mm
	Milling Cutters	milling grinding	M Ø 10 - 22 mm GVB Ø 5 - 40 mm full coating, sintered, profiled according to FEPA, with/without integrated cooling
	Grinding Wheels	pre-cut mid-cut fine cut	M Ø 24 - 200 mm GVB Ø 24 - 250 mm Vollfull coating, sintered, profiled according to FEPA, with/without integrated cooling
	Cutting Wheels	cutting	M, GVB, GVD Ø 50 - 800 mm full coating and segmented
	Accessories	cooling grinding custom-made tools	various editions
	Ultrasonic Tools	drilling milling grinding	M, GVD, GVB, KSI, MN ultrasonic proofed

Index



- 02 The Company
- 03 Product Range
- 05 Connectors and Bodys



- 06 Diamond Hollow Drills**
- 06 Diamond Hollow Drills – sintered
- 07 Diamond Hollow Drills – electroplated



- 08 Chamfering Tools**
- 08 Chamfering Tools – sintered
- 09 Chamfering Tools – electroplated



- 10 Combined Diamond Tools**
- 10 Limiting Countersink
- 11 Clamping Countersink



- 12 Milling Cutters for Edge Processing**
- 12 Finger Milling Cutters Preliminary Grinding – sintered
- 13 Finger Milling Cutters Preliminary Grinding – electroplated
- 14 Milling Cutters Precision Grinding – sintered
- 15 Milling Cutters Precision Grinding – sintered



- 16 Grinding Wheels for Edge Processing**
- 16 Grinding Wheels Preliminary Grinding
- 17 Grinding Wheels Precision Grinding
- 18 Grinding Wheels with Internal Cooling
- 19 Grinding Wheels without Internal Cooling



- 20 Cutting Wheels**
- sintered



- 22 Accessories**
- 22 Sponges
- 23 Washing Box for Diamond Hollow Drills



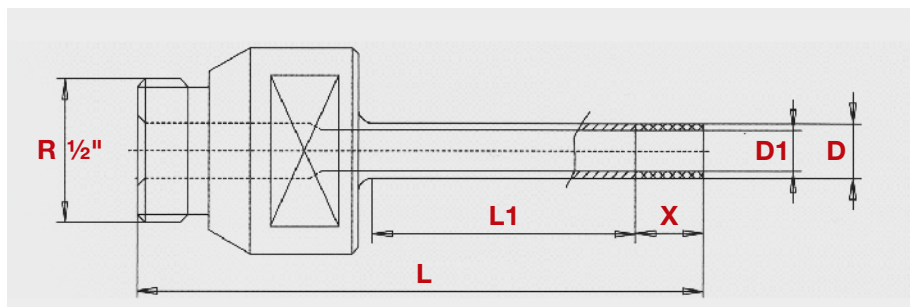
- 24 Product Range,
Contact Details

Diamond Hollow Drills



No. S0101M

sintered

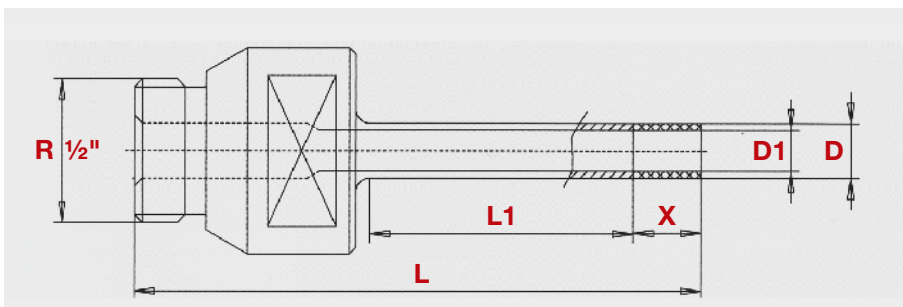


			A	L	L1	X	Ø D1	Ø D
	type 1	type 2	connector/ body	total length mm	drilling depth mm	depth of diamond section mm	inside mm	outside mm
power	light	normal	1 - 6	50 - 250	3 - 200	10	1,5 - 350	3 - 350
section	normal	hight						
fit for service								

Diamond Hollow Drills

electroplated

No. S0101E



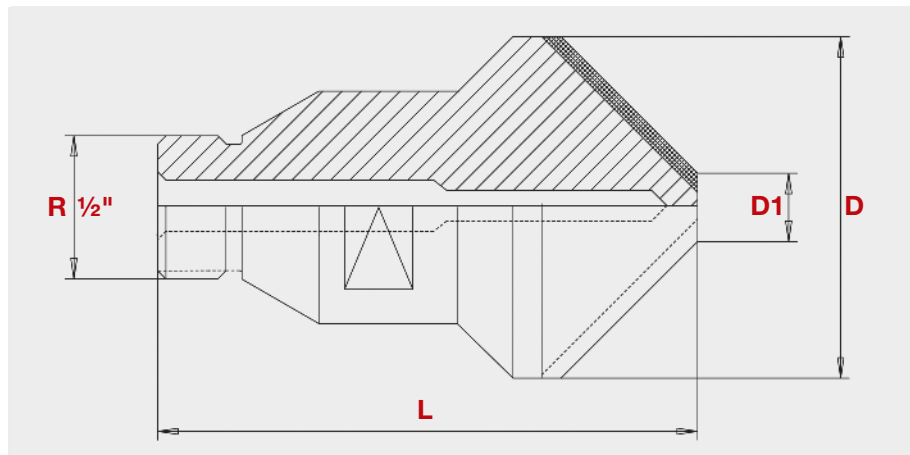
A connector/ body	L total length mm	L1 drilling depth mm	X depth of diamond section mm	Ø D1 inside mm	Ø D outside mm
1 - 6	25 - 250	3 - 200	10	0,3 - 75	0,5 - 75

Chamfering Tools



No. S0102M

sintered

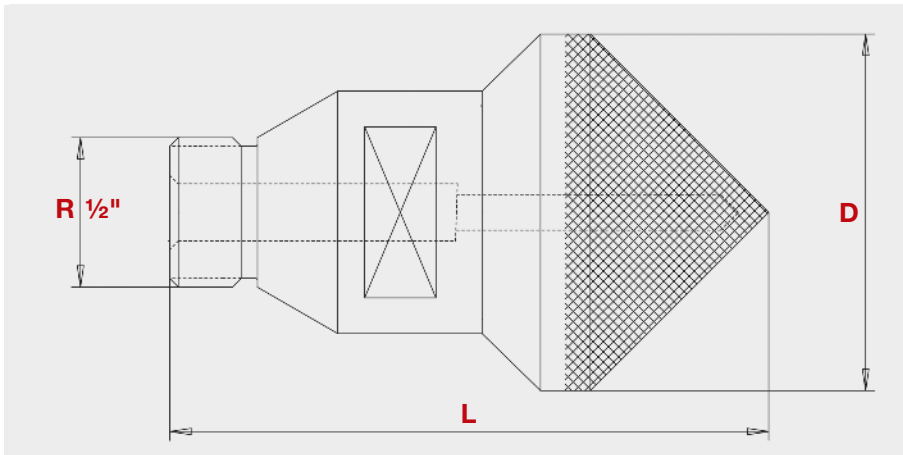


A connector/ body	coating	L total length mm	range of counter- sinking mm	angle degree
R 1/2" + 6	<ul style="list-style-type: none"> - closed - grooved - foraminal - closed + foraminal - segmented 	25 - 125	0,1 - 125	1° - 180°

Chamfering Tools

electroplated

No. S0102E



A connector/ body	coating	L total length mm	range of counter- sinking mm	angle degree
R 1/2" + 6	<ul style="list-style-type: none"> - closed - grooved - foraminal - closed + foraminal - segmented 	25 - 125	0,1 - 125	1° - 180°

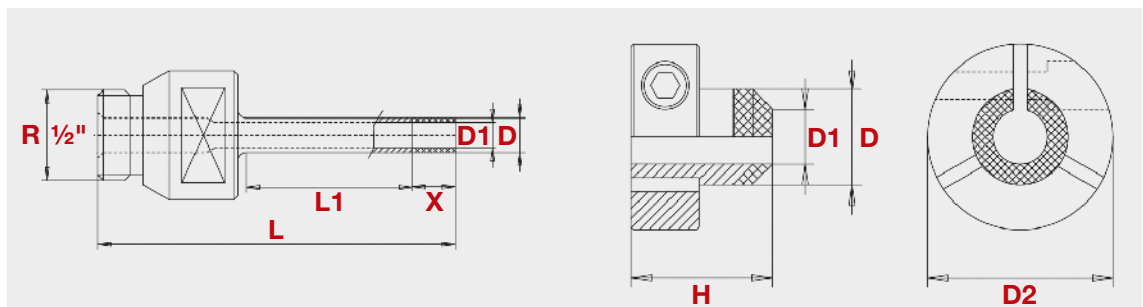
Combined Diamond Tools

Limiting Countersink



No. S0103M

sintered



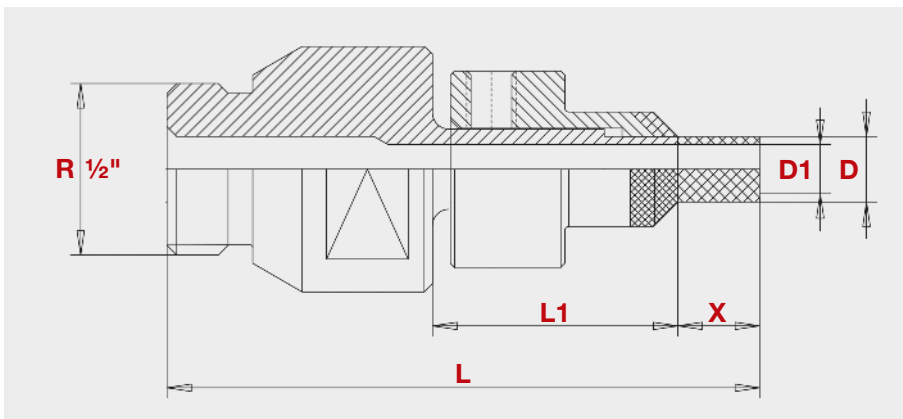
A connector/ body	coating	angle degree	L total length mm	L1 drilling depth mm	D1 small Ø mm	D big Ø mm
R 1/2" + 6	- closed - segmented - grooved	1° - 180°	55 - 125	3 - 50	from 3	to 150

Combined Diamond Tools

Clamping Countersink with Inner Hexahedral Bolt

sintered

No. S0103M



A connector/ body	coating	angle degree	L total length mm	L1 drilling depth mm	D1 small Ø mm	D big Ø mm
R 1/2" + 6	- closed - segmented - grooved	1° - 180°	55 - 125	3 - 50	from 3	to 150

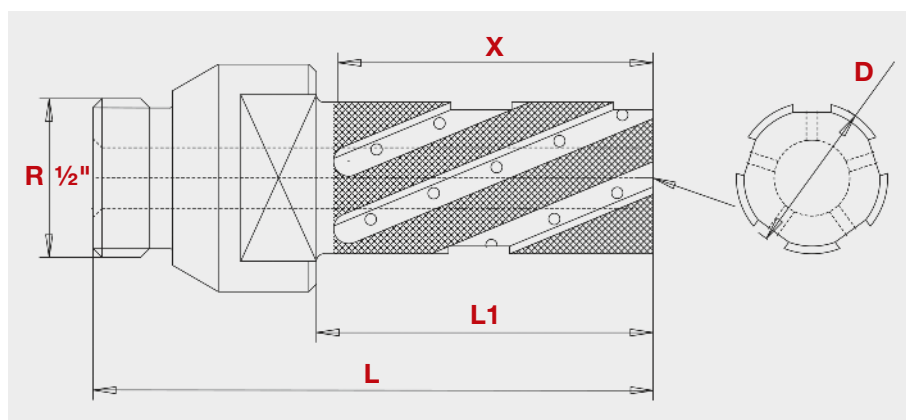
Milling Cutters

for Edge Processing – Preliminary Grinding



No. S0104M

finger milling cutters · sintered

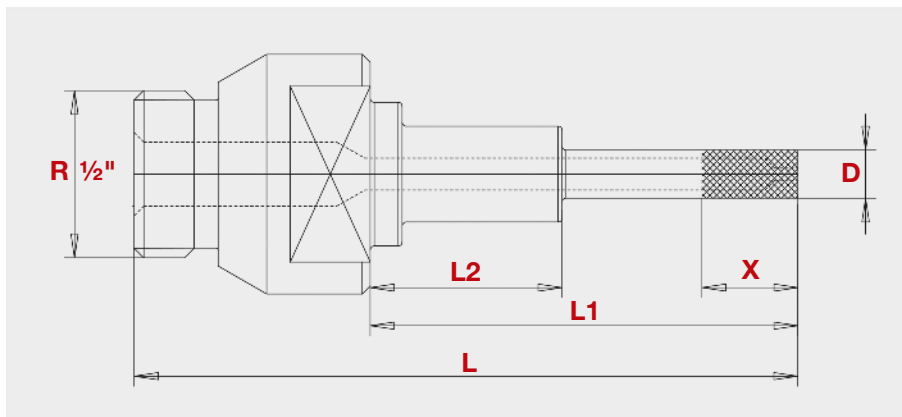


A connector/ body	segments	Ø mm	breadth mm
R 1/2" +	3	10	28
	4	12	28
	4	16	41
	5	20	41
	4	22	34

Milling Cutters for Edge Processing – Preliminary Grinding

finger milling cutters · electroplated

No. S0104E



A connector/ body	segments	Ø mm	breadth mm	type	profile
R 1/2" + 6	1 - 3	4 - 10	5 - 40	grooved opening and stopper for cooler media	pellet cone pin

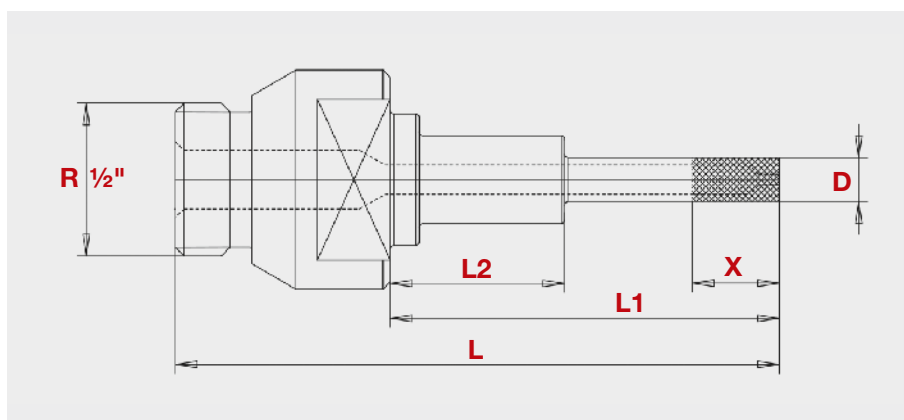
Milling Cutters

for Edge Processing – Precision Grinding



No. S0104M

sintered

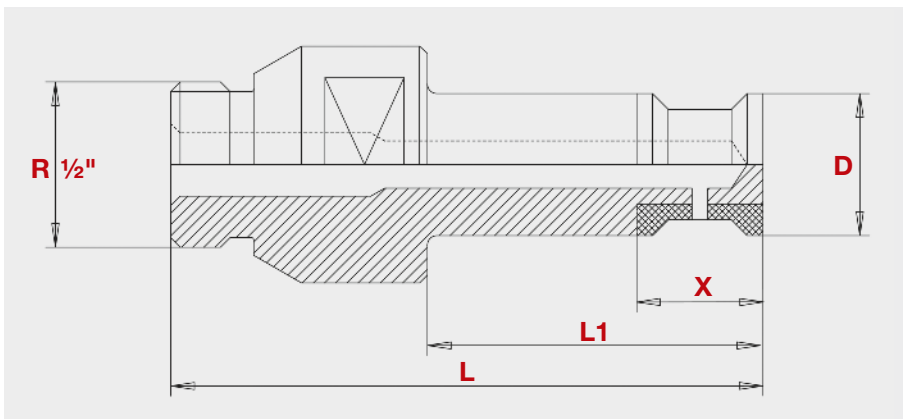


A connector/ body	glass strength mm	profile	Ø mm	breadth mm
R 1/2" + 6	6	straight edge	18	16
	10		18	16
	4		25	12
	6		25	16
	10		25	16

Milling Cutters for Edge Processing – Precision Grinding

sintered

No. S0104M



A connector/ body	glass strength mm	profile	Ø mm	breadth mm
R 1/2" + 6	6	– with C-shaped edge – trapezoidal profile	18	16
	10		18	16
	4		25	12
	6		25	16
	10		25	16

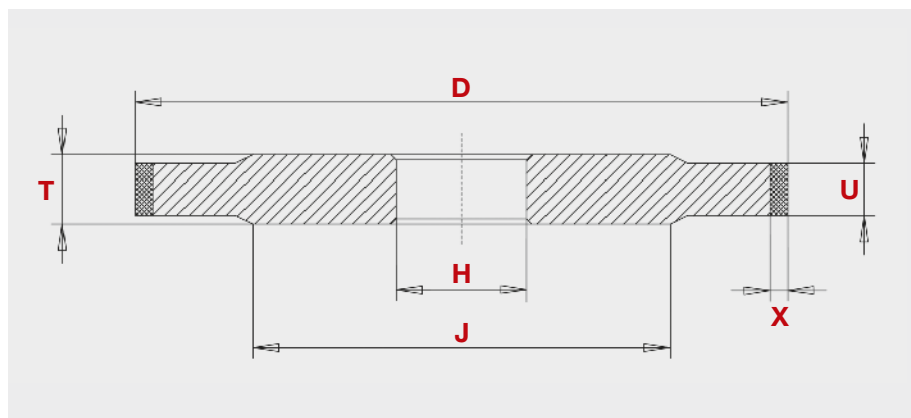
Grinding Wheels

for Edge Processing – Preliminary Grinding



No. S0105M

sintered

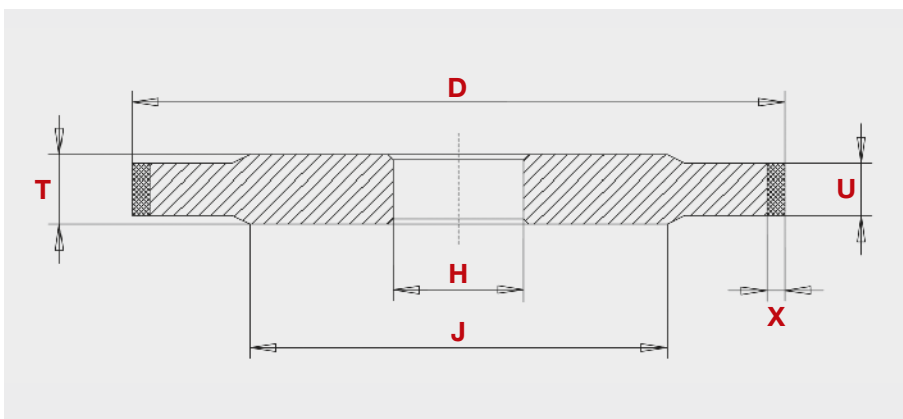


socket	glass strength mm	profile	Ø mm	breadth mm
22	≤ 6	straight edge	100	8
	≤ 8			10
	≤ 10			12
	≤ 12			15
	≤ 15			18
	≤ 19			22

Grinding Wheels for Edge Processing – Precision Grinding

sintered

No. S0105M



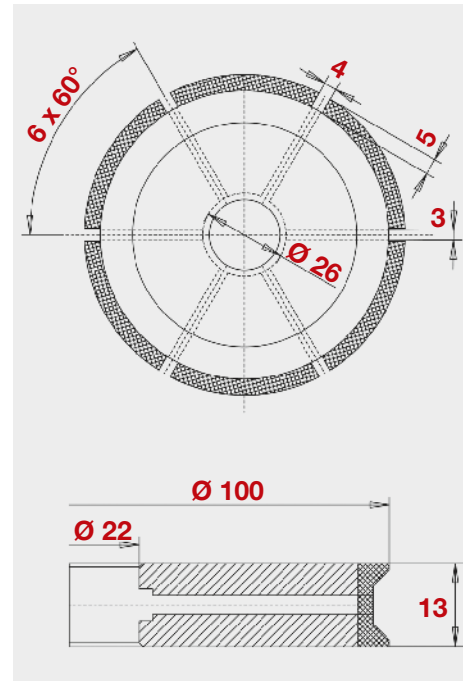
socket	glass strength mm	profile	Ø mm	breadth mm
22	≤ 8	– straight edge	100 - 175	10
	≤ 12	– with C-shaped edge		13
	≤ 15	– trapezoidal profile		16
	≤ 19			20

Grinding Wheels for Edge Processing • with Internal Cooling



No. S0105M

sintered



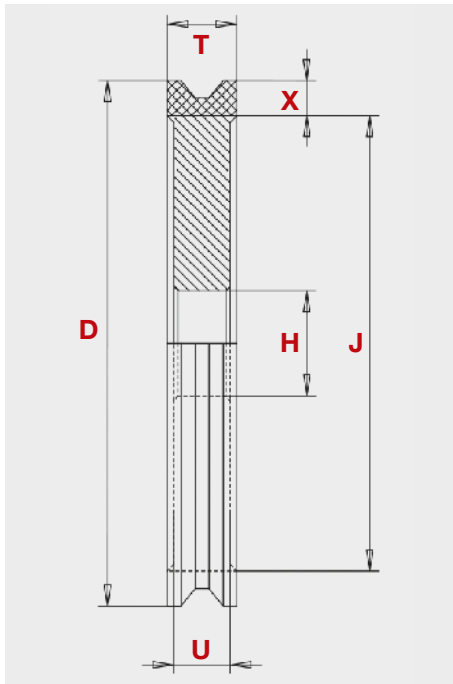
socket	glass strength mm	profile	Ø mm	breadth mm
22	4	PE	100 - 175	10
	5	PE		10
	6	PE		10
	8	PE		13
	5	FA		10
	6	FA		10
	8	FA		13
	10	FA		16
	12	FA		16
	15	FA		19

PE = Pencil Edging (C-shaped edge) • FA = Facet Edging (straight edge)

Grinding Wheels for Edge Processing · without Internal Cooling

sintered

No. S0105M



socket	glass strength mm	profile	∅ mm	breadth mm
22	4	PE single-groove	100 - 175	10
	4	PE double-groove		20
	6	PE single-groove		10
	6	PE double-groove		20
	8	PE single-groove		13
	4	PE single-groove		10
	4	FA double-groove		20
	5	FA single-groove		10
	5	FA double-groove		20
	6	FA single-groove		10
	6	FA double-groove		20
	8	FA single-groove		13
	10	FA single-groove		16
	12	FA single-groove		16
	15	FA single-groove		20

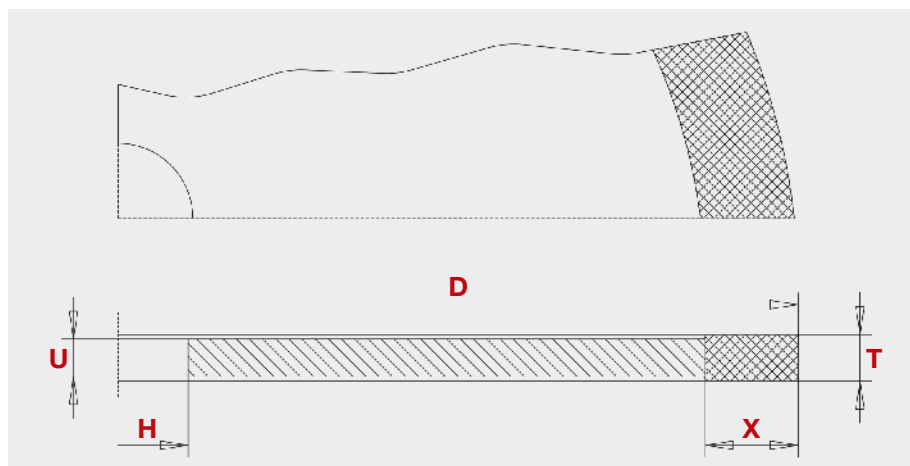
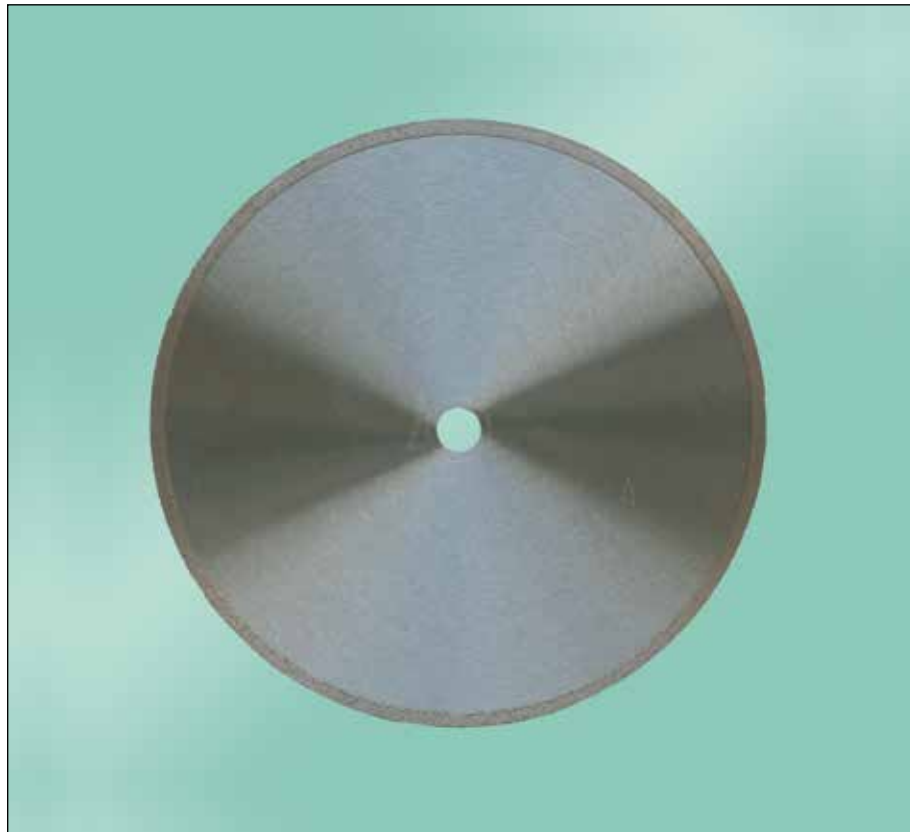
PE = Pencil Edging (C-shaped edge) • FA = Facet Edging (straight edge)

Cutting Wheels



No. S0107M

sintered



Cutting Wheels

sintered (extension adaptor)

No. S0107M



H socket	X depth of diamond section mm	T thickness	D Ø mm	E crossbar stability mm
22	5	0,4	50	0,3
		0,5		0,4
		0,6		0,5
		0,8		0,7
		1,0		0,9
		0,5	64	0,4
		0,6		0,5
		0,8		0,7
		1,0		0,9
		0,5	75	0,4
		0,6		0,5
		0,8		0,7
	1,0	0,9		
	0,4	100	0,3	
	0,6		0,5	
	0,8		0,7	
	1,0		0,9	
	1,2		1,1	
	1,5	1,4		
	0,8	125	0,65	
1,0	0,8			
1,2	0,9			
1,5	1,1			
0,8	150	0,65		
0,9		0,7		
1,0		0,8		
1,5		1,1		
1,0	200	0,8		
1,2		0,9		
1,5		1,1		
1,8		1,4		
1,0	250	0,75		
1,2		0,8		
1,5		1,1		
1,8		1,6		
1,2	300	0,8		
1,5		1,1		
1,8		1,4		
2,0		1,6		

Accessories

Sponges



No. S1107



type	mass mm	binding	grain size	colour
Telum	90 x 55	Ni	60	red
			120	green
			200	yellow
			400	black

Accessories

Washing Box for Diamond Hollow Drills

No. S1102



A
connector on the machine side

A
connector on the tool side

$\frac{1}{2}$ " 20 drive IG
 SDS-Plus ($\frac{1}{2}$ " 20 drive)
 $\frac{5}{8}$ " 16 drive IG
 M 18 x 2,5 IG
 M 16 x 2,0 IG
 M 14 x 2,0 IG
 B 16 (cone on the inside)
 13 mm footstep bearing
 MK 2 (cone on the outside)

R $\frac{1}{2}$ " IG
 and on request



Service hotline: +49 - 5532 - 50 1996-0



SCHOTT Diamantwerkzeuge GmbH

Yorck-Str. 6 · 37627 Stadtoldendorf · Germany
 Fon.: +49 - 5532 - 50 1996-0 · Fax +49 - 5532 - 50 1996-30
 office@schott-diamantwerkzeuge.com
 www.schott-diamantwerkzeuge.com

Office America:

Jandrik & Lukas Amerika LLC.

711 Dartmouth Lane · Buffalo Grove, IL 60089 · USA
 Fon: +1 773 2 1390 59 · Fax: +1 773 7 84 52 59
 erb@jandriklukas.com

Office Asia:

Jandrik & Lukas Asia Pte Ltd

Woodlands Post Office Box 049
 Fon: +65 6367 21 25 · Fax: +65 6367 21 26
 diamondtools@jnlasia.com



SCHOTT
 Diamantwerkzeuge GmbH

